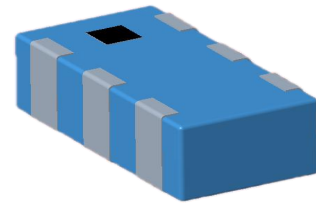


# 1:4 LTCC Transformer

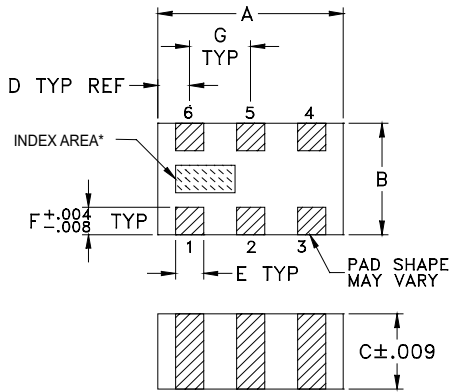
## EDB2012-7020C-001

2022-07-16 Rev. 1



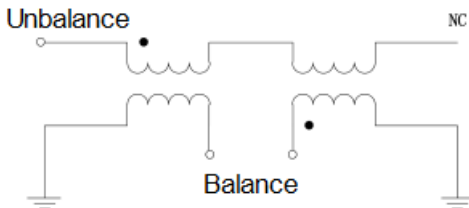
50Ω 1:4 Chip Multilayer Hybrid Baluns 3300-5000 MHz

### OUTLINE DIMENSIONS (Inches/mm)

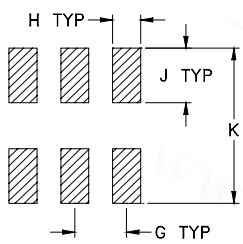


| A    | B    | C    | D    | E    | F    |
|------|------|------|------|------|------|
| .079 | .049 | .033 | .014 | .012 | .010 |
| 2.01 | 1.24 | 0.84 | 0.36 | 0.30 | 0.25 |

### CONFIGURATION



### PCB LAND PATTERN (Inches/mm)



Suggested Layout,  
Tolerance to be within ±.002

| G    | H    | J    | K    |
|------|------|------|------|
| .026 | .014 | .039 | .110 |
| 0.66 | 0.36 | 1.00 | 2.80 |

### PAD CONNECTIONS

|                               |   |
|-------------------------------|---|
| PRIMARY DOT (Unbalanced Port) | 1 |
| PRIMARY (GND)                 | 2 |
| SECONDARY DOT (Balanced)      | 4 |
| SECONDARY (Balanced)          | 3 |
| NO CONNECTION                 | 6 |
| NOT USED (GND Externally)     | 5 |

### Features

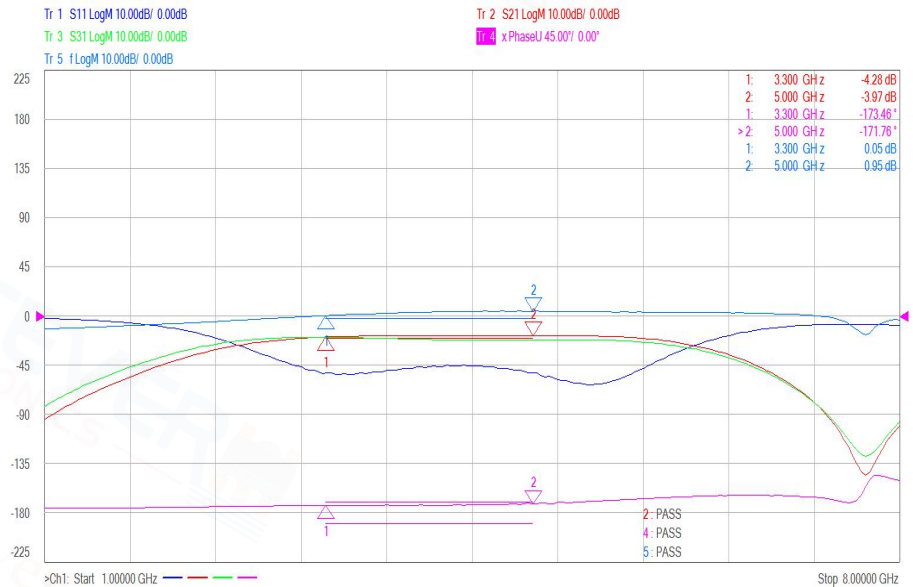
- RF Power, 0.50W Max
- DC Current, 300 mA Max
- 260°C Reflow Compatible
- RoHS compliant and lead free
- Operating temperature range: -40°C to +85°C
- Storage temperature range: -55°C to +100°C

### Applications

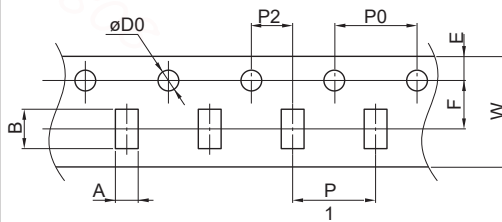
- Impedance matching
- Balanced amplifier
- Wimax/WLAN/BT/GSM
- Cellular and VHF

### Electrical Specifications: TA=25°C, 0dBm, Z0=75Ω

| Parameter            | Test Conditions | Units | Min | Typ | Max  |
|----------------------|-----------------|-------|-----|-----|------|
| Main line Loss       | 3300-5000MHz    | dB    | —   | 1.0 | 2.0  |
| Amplitude Unbalance  | 3300-5000MHz    | dB    | —   | 0.6 | 1.2  |
| Phase Unbalance      | 3300-5000MHz    | °     | —   | 8.0 | 20.0 |
| Unbalanced Port VSWR | 3300-5000MHz    |       |     |     | 2.20 |



### Carrier Tape Orientation



### Tape & Reel Information

| Parameter    | Units | Value |
|--------------|-------|-------|
| Qty per reel | PCS   | 4000  |
| Reel Size    | mm    | 180   |
| Tape Width   | mm    | 8.00  |
| P0           | mm    | 4.00  |
| A            | mm    | 1.40  |
| B            | mm    | 2.30  |
| K            | mm    | 1.40  |