

# Power Splitter/Combiner

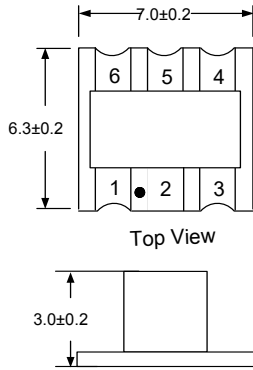
## EDK1031-C001765

2022-08-23 Rev. 0



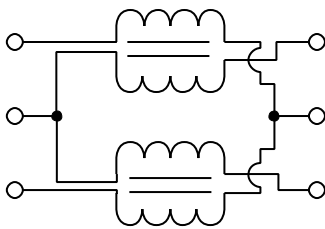
### 75Ω 2 Way-0° Power Divider 5-1250 MHz

#### Outline Drawing(mm)

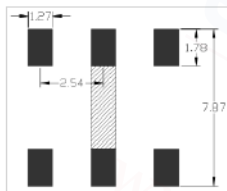


#### Electrical structure

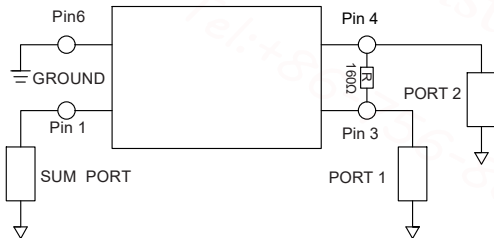
Fig K



#### Recommended layout(mm)



#### Application circuit



#### Pin Connections

SUM PORT	1
PORT 1	3
PORT 2	4
GROUND	6
Pin5 connect to pin2 & isolate from ground	2,5

#### Features

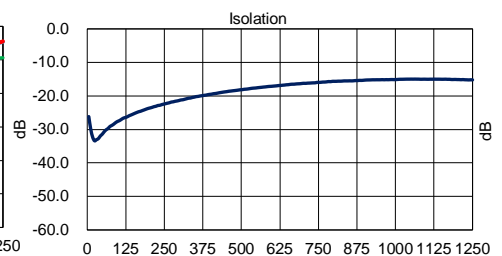
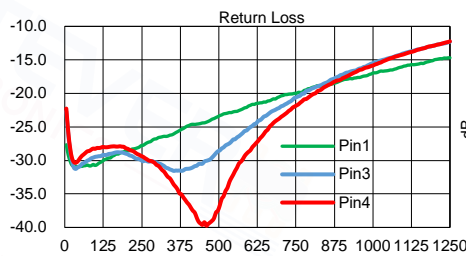
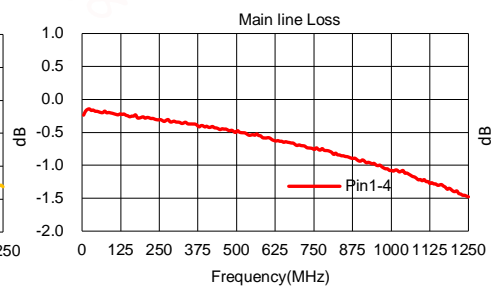
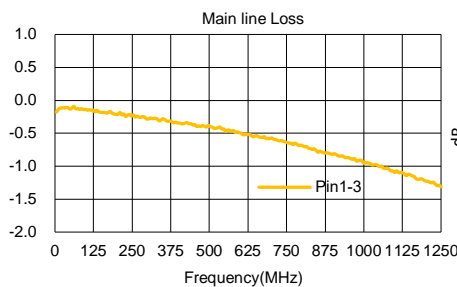
- Input Power:500mW Max
- DC Current:500 mA Max
- 260°C reflow compatible
- RoHS Compliant and Pb free
- Operating temperature range: - 40°C to+85°C
- Storage temperature range: - 55°C to +100°C

#### Applications

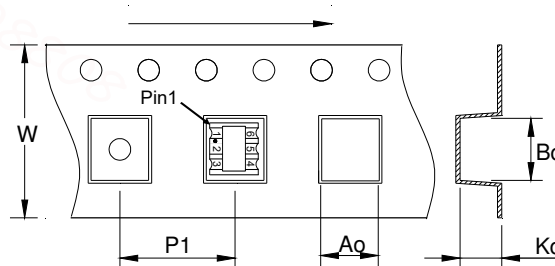
- For Docsis 3.0 & 3.1 Cable Modem.
- For Wideband Push-pull Amplifiers.
- For CATV Amplifiers Module & Set top box.
- For Differential Modulator/demodulator and Active Mixers.

#### Electrical Specifications:TA=25°C, 0dBm, Z0=75Ω

Parameter	Test Conditions	Units	Min	Typ	Max
Main line Loss (Pin1-3)	5-1250MHz	dB	—	1.0	1.8
Main line Loss (Pin1-4)	5-1250MHz	dB	—	0.5	2.1
Input Return Loss	5-1250MHz	dB	10.0	15.0	—
Output Return Loss 1	5-1250MHz	dB	10.0	15.0	—
Output Return Loss 2	5-1250MHz	dB	10.0	15.0	—
Isolation	5-1250MHz	dB	12.0	16.0	—



#### Carrier Tape Orientation



#### Tape & Reel Information

Parameter	Units	Value
Qty per reel	PCS	1500
Reel Size	mm	330
Tape Width	mm	16.00
Pitch	mm	12.00
Ao	mm	7.40
Bo	mm	8.10
Ko	mm	3.80