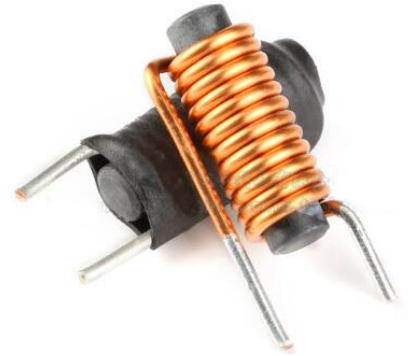
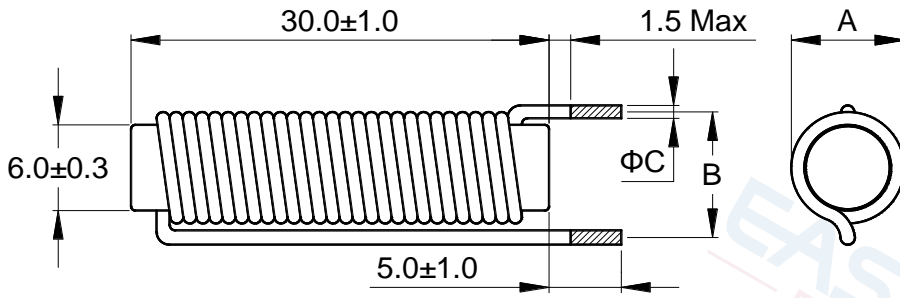


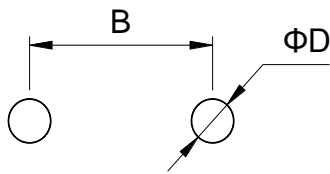
# Rod Choke Inductor



## 1 外形尺寸 Appearance and dimensions (mm)



## 2 参考焊孔尺寸 Reference hole pattern (mm)



| Part No.<br>型号 | A    | B    | C     | D    |
|----------------|------|------|-------|------|
|                | Max  | ±1.0 | ±0.15 | Ref. |
| 4R5            | 10.2 | 14.5 | 1.80  | 2.20 |
| 5R6            | 10.0 | 14.0 | 1.70  | 2.10 |
| 6R8            | 9.50 | 12.5 | 1.40  | 1.80 |
| 7R5            | 9.50 | 12.5 | 1.40  | 1.80 |
| 8R2            | 9.20 | 12.0 | 1.30  | 1.70 |
| 100            | 9.00 | 11.5 | 1.20  | 1.60 |
| 150            | 8.50 | 10.0 | 0.90  | 1.30 |
| 220            | 8.20 | 10.0 | 0.80  | 1.20 |

## 3 电气特性 Electrical characteristics

| Part No.<br>品名 | Inductance (μH)<br>电感值 ※1<br>±20% | D.C.R. (mΩ)<br>直流电阻 |      | Saturation<br>current (A)<br>饱和电流 ※2<br>Typical | Temperature rise<br>current (A)<br>温升电流 ※3<br>Typical |
|----------------|-----------------------------------|---------------------|------|---|---|
|                |                                   | Typical             | Max  |   |   |
| KRA0630-4R5M   | 4.50                              | 2.70                | 3.50 | 16.5  | 24.3  |
| KRA0630-5R6M   | 5.60                              | 3.29                | 4.28 | 15.0  | 22.0  |
| KRA0630-6R8M   | 6.80                              | 4.70                | 6.00 | 14.0  | 18.4  |
| KRA0630-7R5M   | 7.50                              | 4.90                | 6.40 | 13.0  | 18.0  |
| KRA0630-8R2M   | 8.20                              | 5.79                | 7.53 | 11.0  | 16.6  |
| KRA0630-100M   | 10.0                              | 7.68                | 9.98 | 10.5  | 14.4  |
| KRA0630-150M   | 15.0                              | 10.3                | 13.4 | 9.00  | 12.4  |
| KRA0630-220M   | 22.0                              | 24.6                | 32.0 | 7.50  | 8.00  |

■ All data is tested based on 25°C ambient temperature.

所有数据基于环境温度 25°C 条件下测试。

※1 Inductance measure condition at 1kHz, 0.25V.

电感测试条件为 1kHz, 0.25V。

※2 Saturation current: the actual value of DC current when the inductance decrease 20% of its initial value.

饱和电流: 电感值下降其初始值的 20% 时所加载的实际直流电流值。

※3 Temperature rise current: the actual value of DC current when the temperature rise is ΔT40°C (Ta=25°C).

温升电流: 使产品温度上升到 ΔT40°C 时所加载的实际直流电流值 (Ta=25°C)。

※ Special remind: Circuit design, component placement, PWB size and thickness, cooling system and etc. all will affect the product temperature. Please verify the product temperature in the final application.

特别提醒: 线路设计, 组件布局, 印刷线路板 (PWB) 尺寸及厚度, 散热系统等均会影响产品温度。

请务必在最终应用时, 验证产品发热状况。